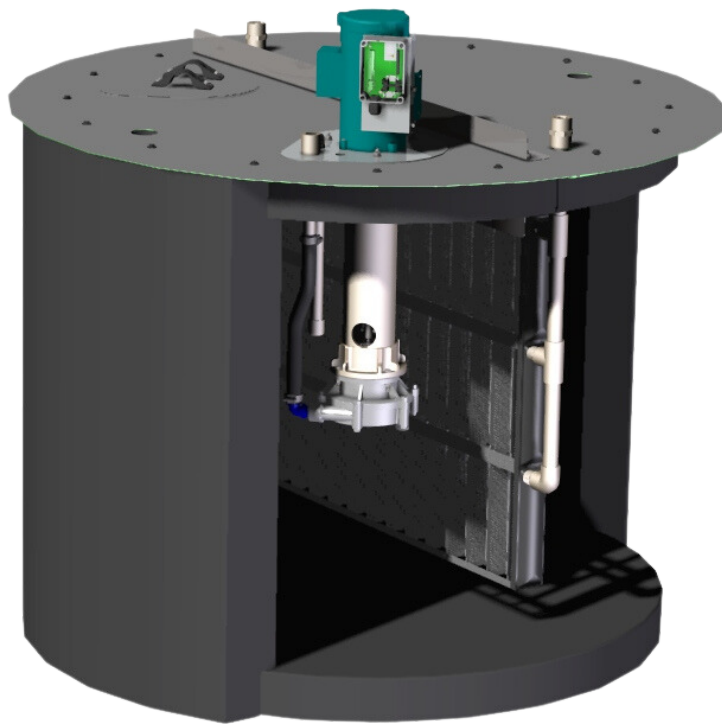


# Gen<sub>2</sub>

THERMAL STORAGE TANK



Versatile Applications  
Simple Assembly  
Cost Effective



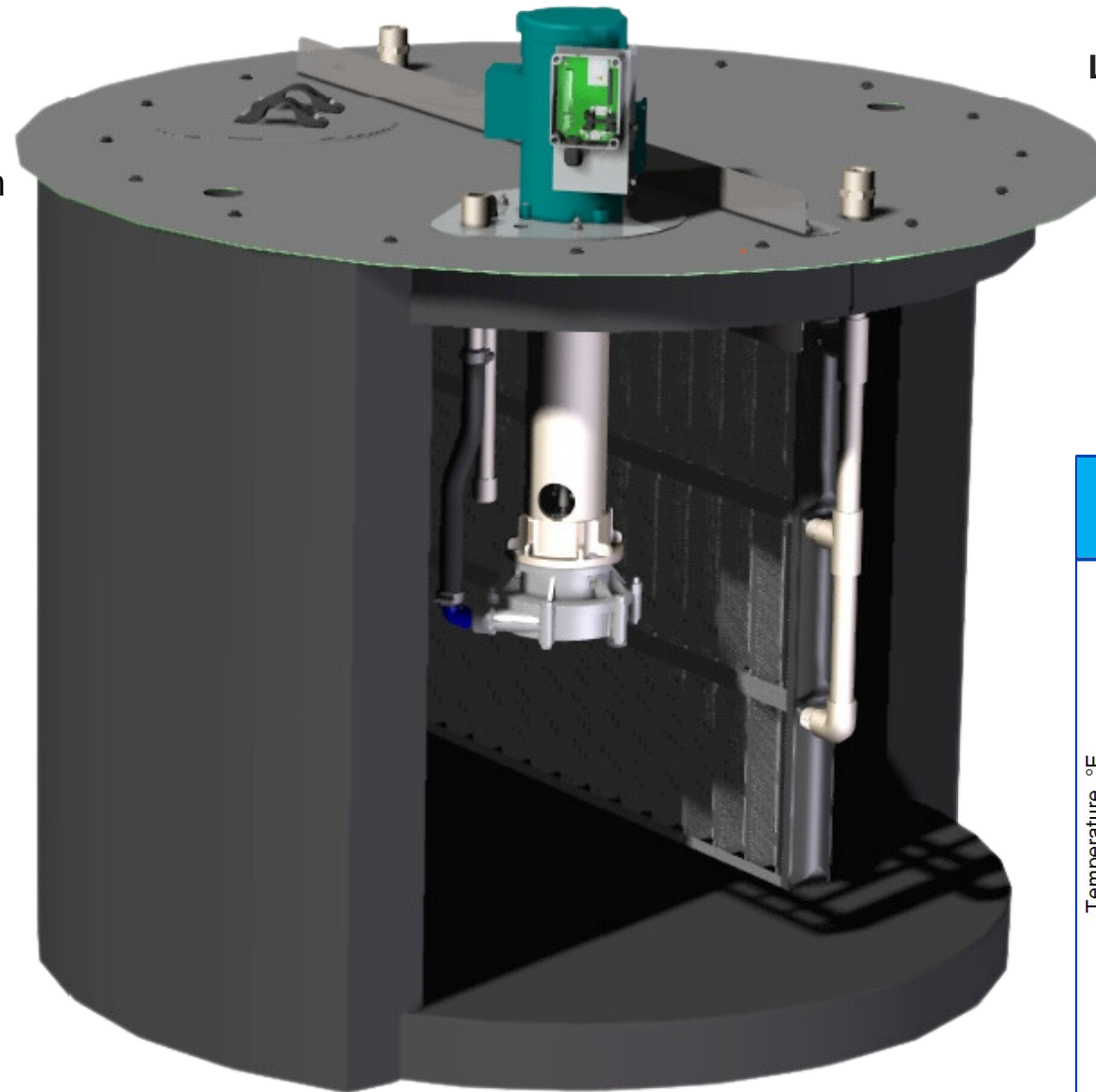
## Patented design

- Lightweight modular design for easy installation and shipping
- Durable EPP foam provides enhanced R-18 thermal insulation, stiffness, and impact resistance resulting in higher efficiency thermal performance vs. standard tanks
- Recyclable materials provide long life, light weight, corrosion resistant construction with custom color availability
- Customized Storage capacity starting at 350 gallons (1350 liters)
- Customized, interchangeable liners allow flexible use of different fluids for solutions in many industries
- Hot or Cold storage ( -25 F to 200 deg F )
- Tank Architecture allows for multiple equipment options (See specs on page 4)
- Easy to assemble and disassemble

Scan QR Code for video  
Tank Ease Of Set Up



## Energy Management

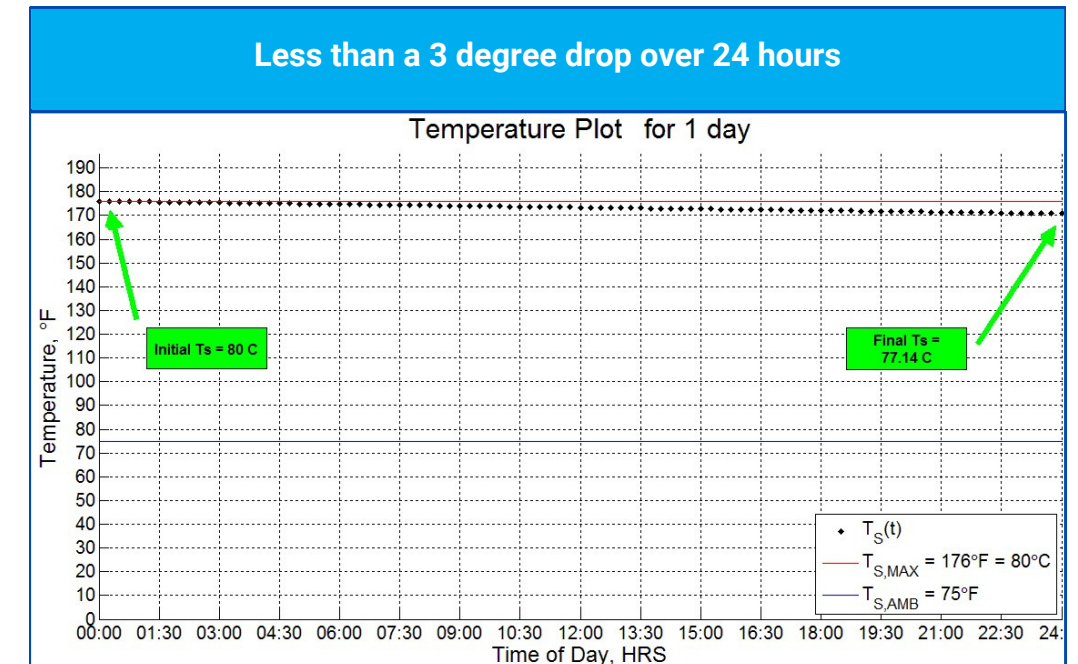


Can be installed in either Interior or Exterior locations

Lightweight modular design for easy Installation and Shipping

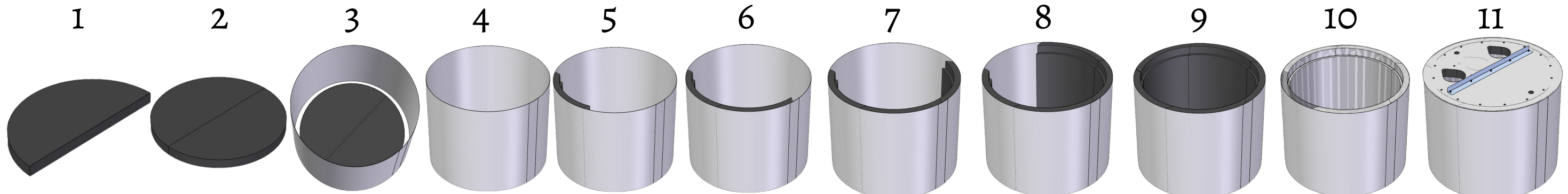
Durable and corrosion resistant construction with custom color availability

Interchangeable liners allow flexible use of varying operations liquids for solutions in many industries

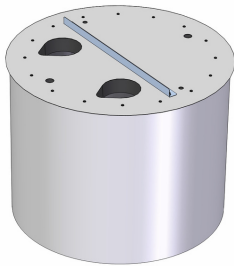


Simple Assembly (sets up in minutes)

Assembled Weight of 113.5 lbs



# Dimensions and Capacities



Reference Part Number	PPTS0115.03
Storage Volume	350 gallons [ 1350 Liters ]
Diameter	60 inches [ 1.524 m ]
Overall Height	49.6 inches [ 1.259 m ]
Weight ( no fluid )	114 lbs [ 51.5 kgs ]
Weight ( filled with water )	3,089 lbs [ 1,402 kgs ]
Floor Loading ( filled with water )	157.4 lbs per sq ft [ 769 kgs per m2 ]
Shipping ( single unit )	48 x 48 x 54 inch tall palletized box - 230 lbs
Shipping ( volume purchases )	55 units per 40 foot ISO Container - 7,000 lbs

## Energy Storage

Energy Storage per Deg C Temperature	1.56 kWh [ 5,353 BTU ]
Energy Storage @ 35 Deg C Temp Delta	54.6 kWh [ 186,350 BTU ]
Temperature loss per 24 hours ( free convection )	2.1 Deg C [ 3.8 Deg F ]

## Construction

Structure and Insulation ( Sidewalls and Ends )	Expanded Polypropylene Foam ( EPP ) Density = 48 gram per liter [ 3 PCF ] Nominal Insulation Value = R18
Working Temperature ( Min )	- 35 Deg C [ - 31 Deg F ]
Working Temperature ( Max )	+130 Deg C [ +266 Deg F ]
Outer hoop and Tank Cover	GAF Evergard 80 mil [ 2 mm ] TPO Roofing Membrane TPO = ThermoPlastic Olefin UL Listed, FM Approved, Miami-Dade County Product Control Approved, State of Florida Approved, CRRC Rated, Title 24 Compliant, ENERGY STAR® Certified, ASTM D6878.
Liner	40 mil High Temperature PVC
Material Compatability	Potable Water Safe
Temperature Rating	93 Deg C [ 200 deg F ]
Fabrication	Heat Bonded

## Optional Content

1) Pump Module - Reference Part Number	PPPL0001.06
Motor ( standard )	1/2 hp washdown 90 VDC
Pump Head Material	Noryl Plastic
Performance ( water )	35 Gal per Min at 30 foot head height
Level Sensor	Float type - Hall effect
Temperature Sensor	NTC ( Negative Temp Coefficient )
Weight	22 kgs [ 48 lbs ]
2 ) Heat Exchanger - Reference Part Number	PPPL0484.02
Type	Immersive - 8 bar
Body Construction	Nylon Plastic
Plumbing Construction	1 inch SCHD 80 CPVC Pipe and Fittings
Heat Exchanger Connection ( Inlet and Outlet )	1 inch female tapered pipe
Heat Transfer Rate ( SI )	38 kW at 28 liter per minute flow
Heat Transfer Rate ( Imperial )	130,000 BTU per hr at 7.4 gallon per minute flow
Maximum Flow Rate	233 liters per minute [ 60 gallons per minute ]
Operating Pressure	5.5 Bar [ 80 psi ]
Operating Temperature ( Min )	Minus 40 deg C [ minus 40 Deg F ]
Operating Temperature ( Max )	121 deg C [ 250 deg F ]
Weight	9 kgs [ 20 lbs ]
3) Multi Tank Connection - Reference Part Number	PPTS0123.02
Connection Type	Siphon Tube
Construction	2 inch SCHD 80 CPVC pipe and fittings
External Pipe sections	Pre - insulated PUR( Polyurethane ) with PVC jacket
Weight	10 kgs [ 22 lbs ]

